

4.0 Finding your way around the workspace

Description

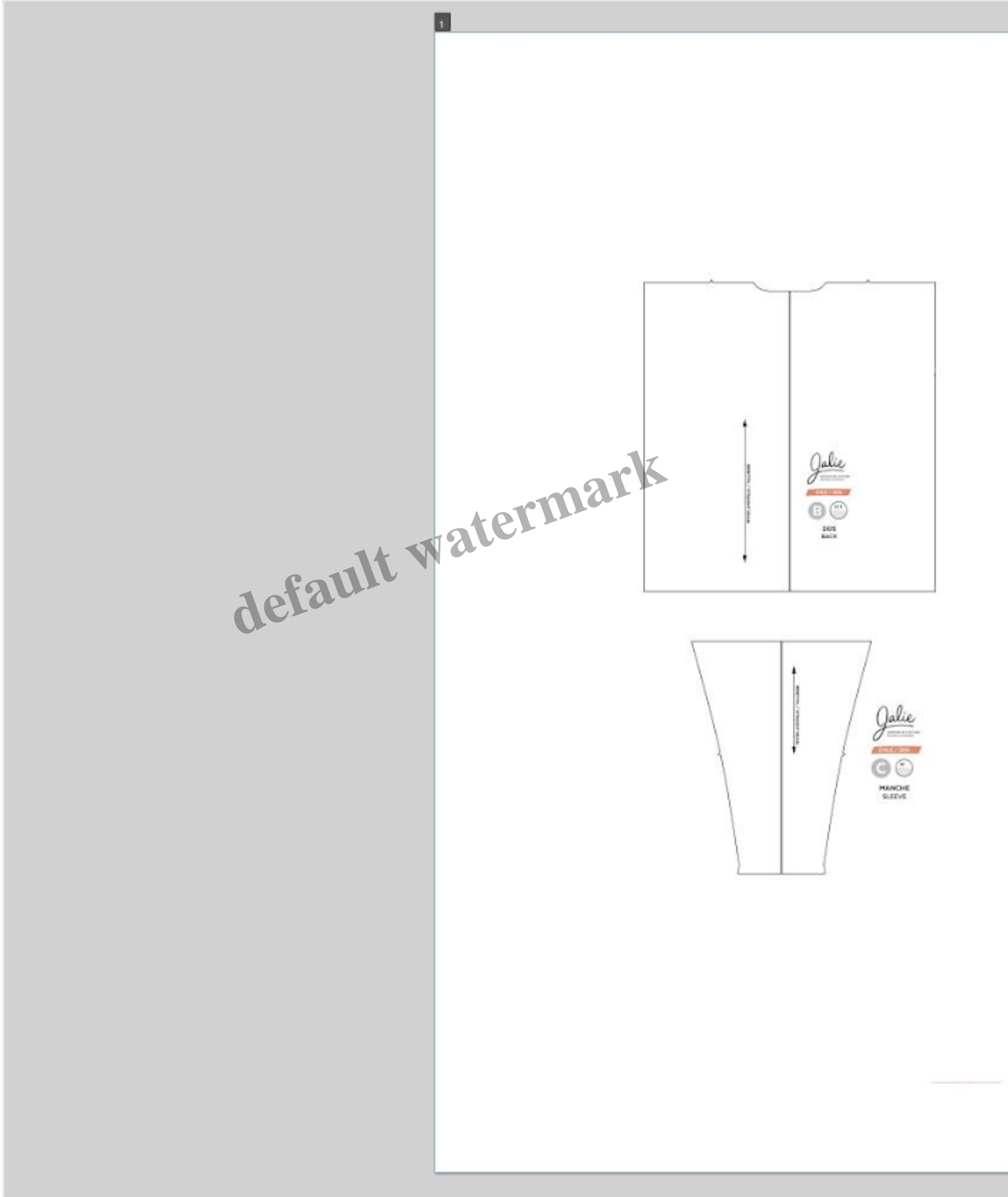
[Back to
Beginner's Guide
to Inkscape for Sewing
table of contents](#)

“What are all of these things around my pattern?” is the first question that comes up when using Inkscape. For projector sewing, we can hide most of the toolbars as we only use a few key parts of the workspace features.

One of the advantages of Inkscape over Adobe for projecting is that we can do most of our pattern preparation work in Full Screen mode so that the workspace is as simple as possible with just the tools we need. [Click here for steps to access and customize Full Screen mode](#) to do that, and then you don't even need to know anything about any of the toolbars as they will be hidden.

Here's how Full Screen mode can look for basic pattern projecting work, with layers panel on the left, zoom setting on the lower right and menu functions at the top.

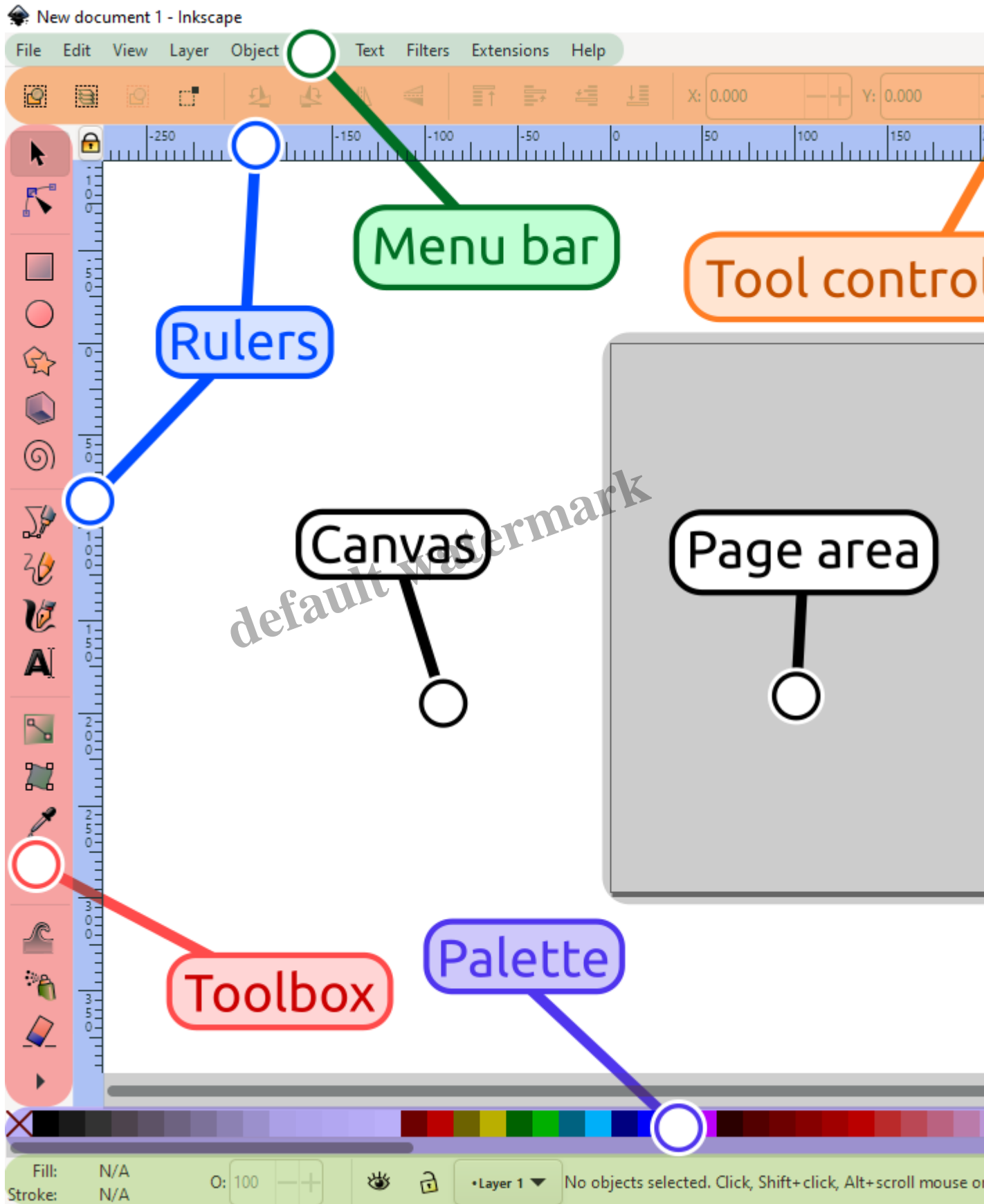
File Edit View Layer Object Path Text Filters Extensions Help




If you want to understand more about the Inkscape workspace tools, the picture and description below give an overview of each of the parts of the workspace. There's no need to remember each of these names and functions, just refer back to this information when needed.

From [The User Interface — Inkscape Beginners' Guide 1.0 documentation \(inkscape-manuals.readthedocs.io\)](#):

default watermark



- The application **menu bar** along the top provides general menu options. Some are similar to other software programs (**File - Save, Edit - Copy**, etc.). There are also Inkscape-specific items.
- The **tool controls bar** just below adjusts to the currently selected tool. It displays the tool's options.
- Vertically on the left, the **toolbox** contains the main drawing tools. Only one tool can be selected at once.
- The large blank area is the **canvas**, where the image is edited.
- A black outline represents the visible **page area**.
- On the right side of the window, there are two toolbars. To the left is the **commands bar** which gives quick access to common commands, which are also available via the dropdown menus. If not all the commands are shown, there is a right-facing arrow that gives access to the hidden choices.
- To the right is the **snap controls bar**. We suggest you deactivate snapping for now, by pressing the topmost button in the bar, or by pressing .
- There are **rulers** at the top and on the left of the canvas to help with grid and guideline placement.
- **Scrollbars** are available to the right and bottom to move around on the canvas.
- The **color palette** is near the bottom of the window. Its most basic usage is to change the fill color of an object. See also [The Color Palette](#).
- At the very bottom, the **status bar** provides information such as the colors of the selected object, layers, cursor coordinates, zoom level and page rotation. It also contains a field where Inkscape can display helpful texts, such as the number and type of selected objects, or tips about keyboard shortcuts and usage hints. Whenever Inkscape doesn't do what you think it should be doing, look here first.
- Dialogs for specific functionality are available will by default appear attached to the right of the canvas, in the **docking area**.

[Back to
Beginner's Guide
to Inkscape for Sewing
table of contents](#)

Category

1. inkscapeguide
2. part-a

Date Created

August 31, 2023

Author

sashasewist